

DC polyols range at a glance

PEARLITOL® mannitol

- PEARLITOL® 100 SD
- PEARLITOL® 200 SD
- PEARLITOL® 300 DC
- PEARLITOL® 400 DC
- PEARLITOL® 500 DC

NEW:

- PEARLITOL® Flash

NEOSORB® sorbitol

- NEOSORB® P 60 W
- NEOSORB® P 100 T
- NEOSORB® P 20/60
- NEOSORB® P 20/60 DC

NEW:

- NEOSORB® P 150 DC
- NEOSORB® P 300 DC

SweetPearl™ maltitol

NEW:

- SweetPearl™ P 300 DC

XYLISORB® xylitol

NEW:

- XYLISORB® DC

www.roquettepharma.com

www.roquettenutra.com

www.roquette.com


ROQUETTE
Offering the best of nature

The information in this technical bulletin is to our best knowledge true and accurate but all instructions, recommendations or suggestions are made without guarantee. Furthermore, no liability is accepted if use of any product in accordance with these data or suggestions infringes any patent. © registered trademark from ROQUETTE Frères. Copyright September 2009

Creative and reliable? DC formulation!

Yes – with Roquette directly compressible polyols, such as mannitol DC and, now also, sorbitol DC, xylitol DC and maltitol DC. Whatever your product, Roquette's DC polyols offer the flexibility you need for formulations that open up markets. Aroma, texture, sweetness – whatever it takes, Roquette gives you the keys to creativity and reliability.




ROQUETTE

www.roquettepharma.com

Roquette has enlarged its range of directly compressible polyols. In addition to already existing DC grades, the portfolio now contains new grades of DC mannitol and DC sorbitol. DC maltitol and DC xylitol have also been added. A comprehensive range of DC polyols is now available allowing the creation of a multitude of tastes and textures for all types of tablets.

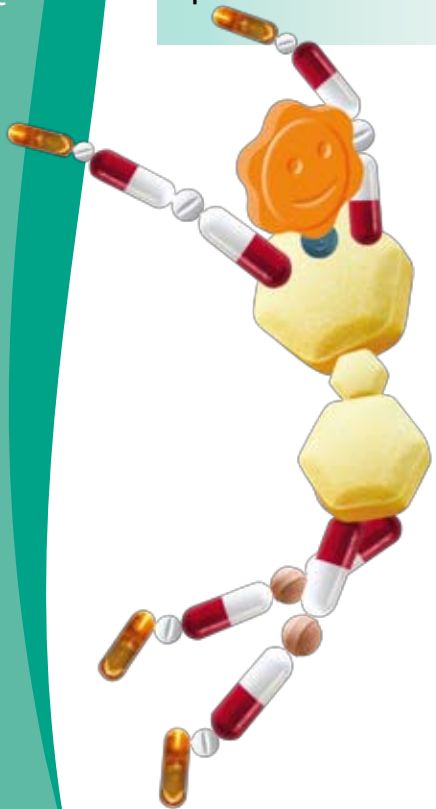
Tablets

There are many different types of tablets: chewable, orodispersible, suckable, swallowable and effervescent.

For those required to remain in the mouth (from a few tens of seconds for the orodispersible to a few minutes for the suckable), mouthfeel is a key criterion for success.

The overall sensation in the mouth is created by a combination of taste and texture.

Our **DC polyol** range offers a range of possibilities.



Taste

Taste has to be pleasant to ensure patient compliance, whatever the tablet type and the active bitterness. Used in proportionately large amounts, **DC polyols** contribute significantly to tablet taste due to:

- ✓ sweetness: mannitol < sorbitol < maltitol < xylitol
- ✓ cooling effect: mannitol < maltitol < sorbitol < xylitol
- ✓ aroma preference: mint flavours are reinforced with xylitol or sorbitol; fruit flavours combine well with maltitol.

Texture

Texture is a key sensation for tablet takers and is an extremely important characteristic of suckable, chewable or orodispersible tablets. **DC polyols**, alone or in combination, offer a multitude of textures because they influence:

- ✓ hardness: maltitol < xylitol < mannitol < sorbitol
- ✓ dissolution time: mannitol < maltitol < xylitol < sorbitol
- ✓ inherent texture: creamy with mannitol, crunchy with maltitol, smooth with sorbitol or xylitol

